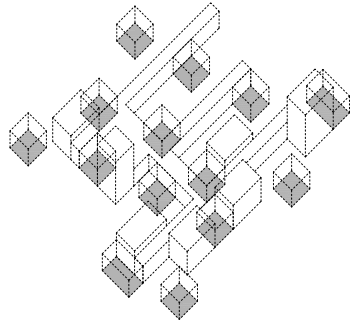
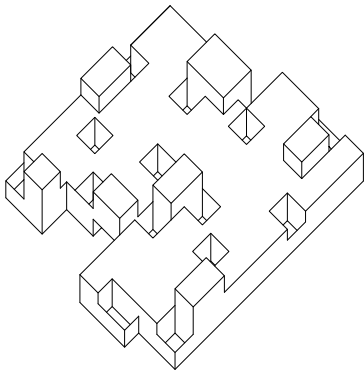
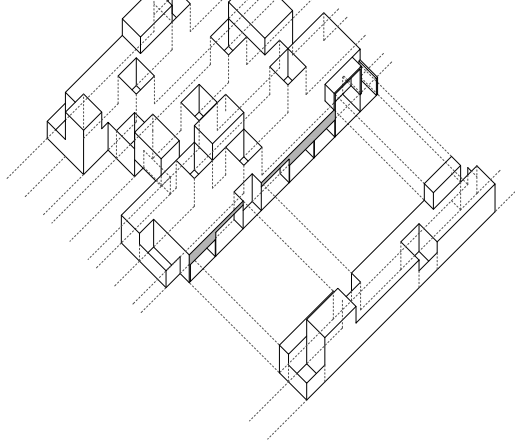
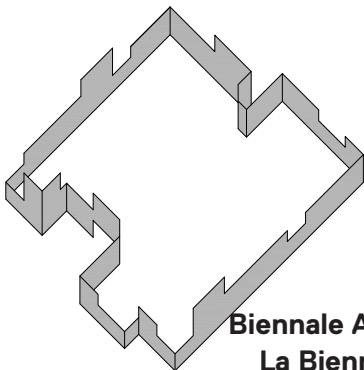


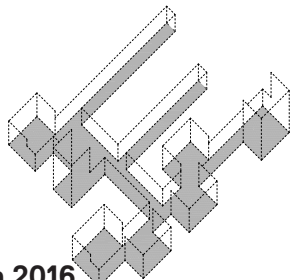
**UNFINISHED**  
**Pabellón español - Spanish Pavillion**



**Entresitio**



**Biennale Architettura 2016**  
**La Biennale di Venezia**



**El inicio de estos tres edificios se remonta a un concurso poco usual convocado para la construcción de dos edificios idénticos (mismo cliente, mismo programa funcional y mismo presupuesto) en dos lugares distintos de Madrid (Usera y San Blas) cuya característica común consistía en su falta de relevancia. La propuesta fue un único edificio cuya autonomía formal y funcional fuera suficiente para poder “existir” con independencia del emplazamiento con motivo de un segundo concurso para el solar de Villaverde hubo la ocasión de verificar que el modelo espacial y la solución en planta eran de nuevo viables, aunque en este caso en una situación urbana más comprometida de alineación a calle y edificio próximo al peatón. El programa del centro de salud se desarrolla de manera extensiva en una sola planta baja. Las distintas dependencias del programa se ordenan generando una parrilla ortogonal irregular poco densa, donde 13 patios se distribuyen al tresbolillo entre las estancias públicas y privadas siguiendo tres (no)-corredores paralelos. Se establece una relación de opuestos entre la fachada exterior y el espacio interior, una síntesis entre lo intelectual y lo experimental, lo clásico y lo pintoresco.**

The inception of these three buildings goes back to an unusual competition held for the construction of two identical buildings (same client, same program and same budget) in two different sites in Madrid (Usera and San Blas), whose common characteristic consisted in their lack of relevance. This proposal was the only building whose formal and functional autonomy were sufficient for it to “exist” independent of its location. A second competition for the Villaverde site served as an occasion to verify that the spatial model and the plan solution were newly viable, although in this case in a more sensitive urban setting, due to the street alignments and the proximity of the building to the pedestrian. The program for the health centre is laid out entirely on the ground floor. The different program areas are ordered on a loosely-formed, irregular orthogonal grid, with 13 courtyards staggered among the public and private areas, following three parallel (no)-corridors. A relationship of opposites is established between the exterior facade and the interior space, a synthesis between the intellectual and the experimental, the classic and the picturesque.

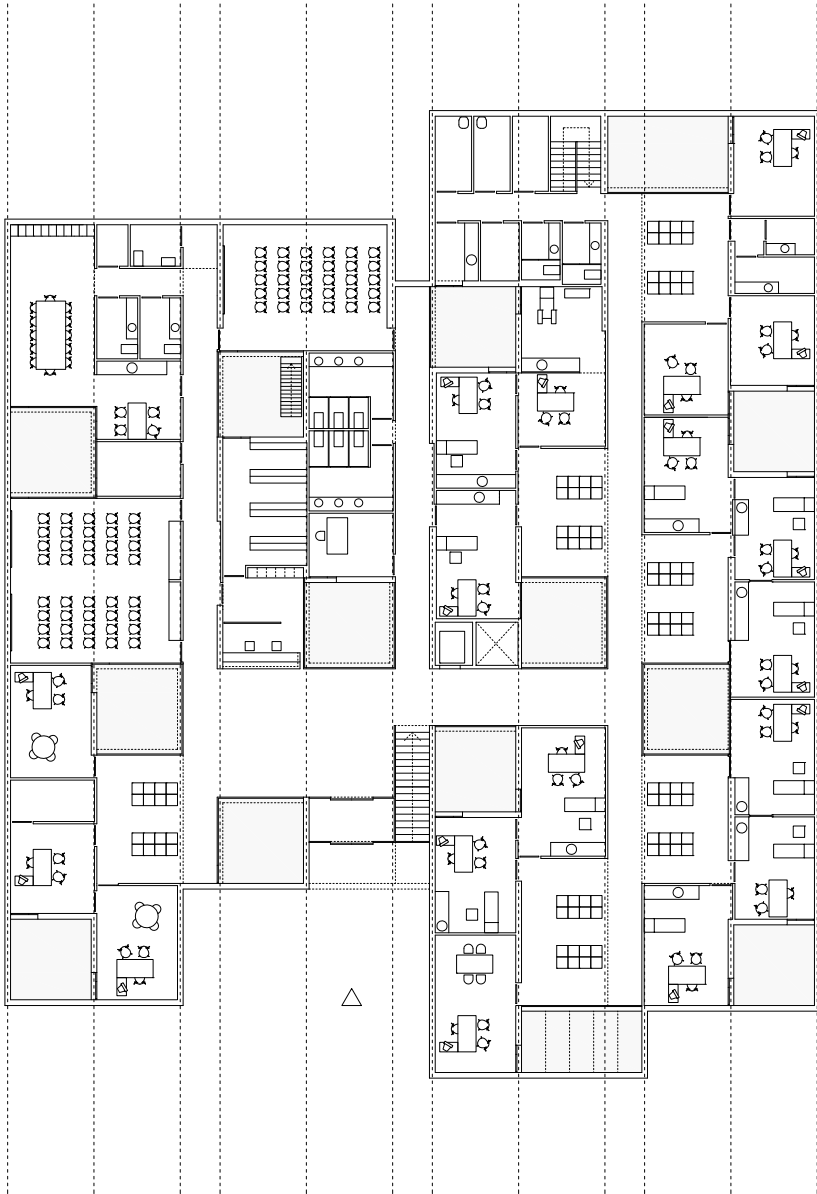






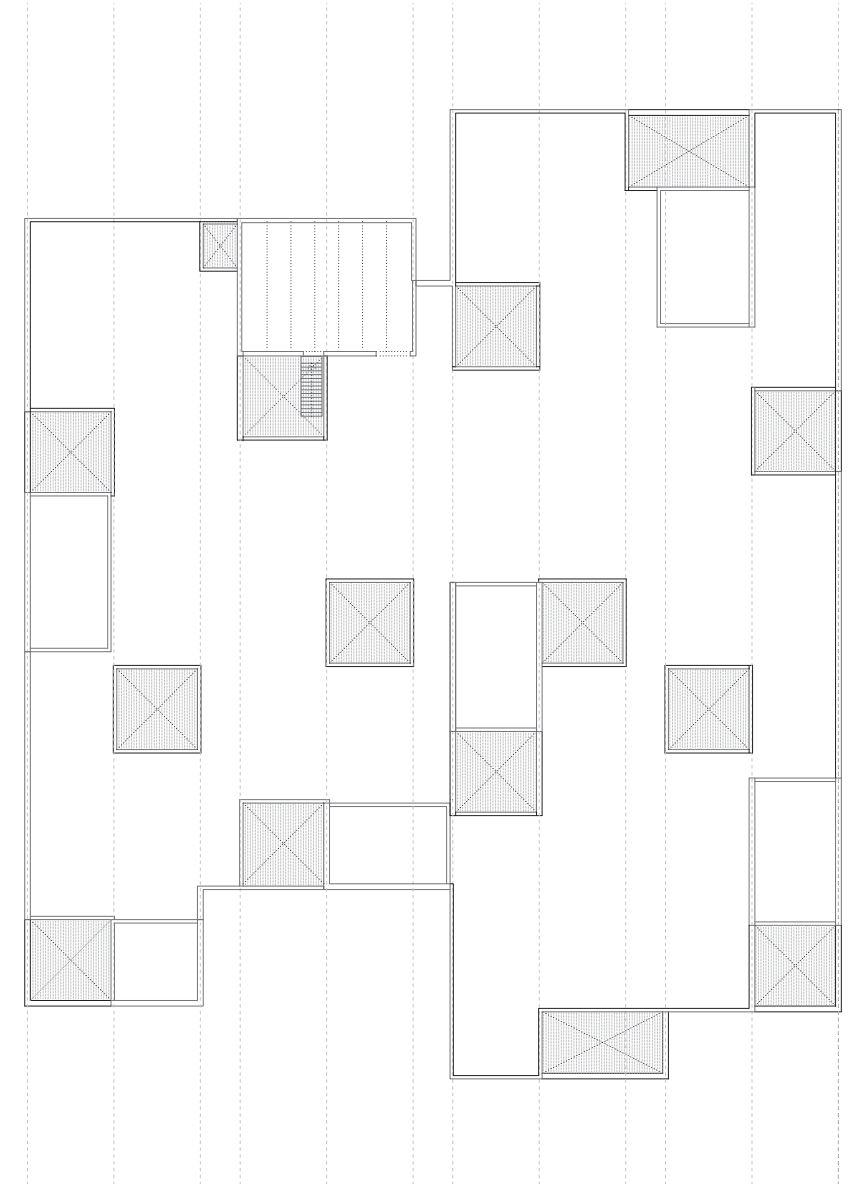


# Planta - Plan

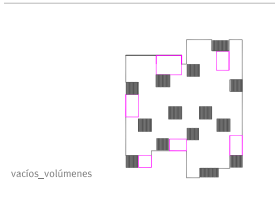




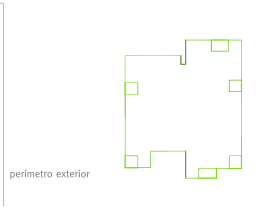
# Cubierta · Roofing



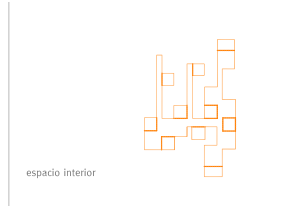
# Alzados y secciones - Elevations and sections



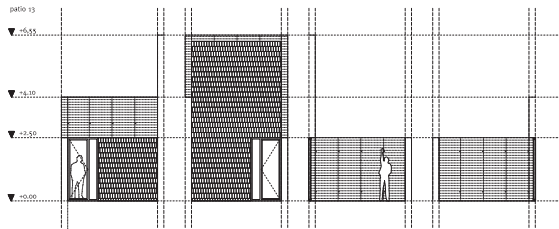
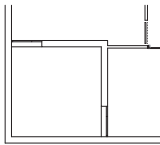
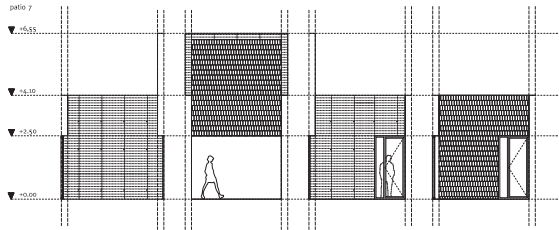
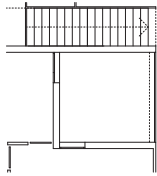
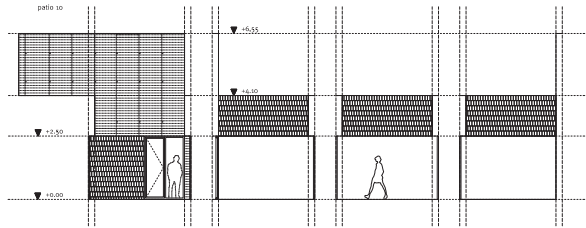
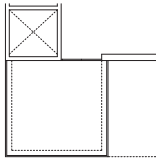
vacios\_volumenes



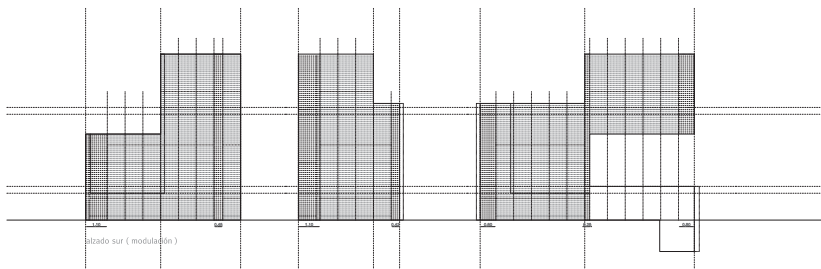
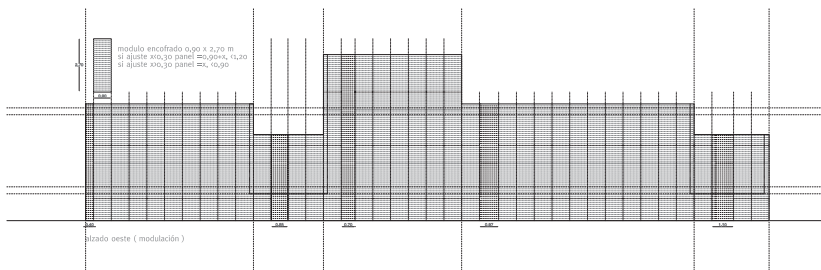
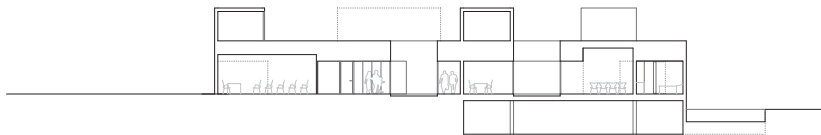
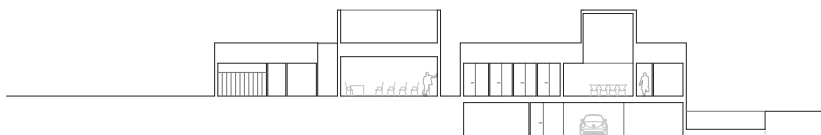
perímetro exterior



espacio interior



# Alzados y planos encofrado - Elevations and formwork plans



**3x1 | 3 Centros Municipales  
de Salud en Madrid·  
3x1 | 3 Municipal Health  
Centers in Madrid**

**Fotografías· Photography:  
Roland Halbe  
2005-2007**

**Localización· Location:  
San Blas + Usera +  
Villaverde.Madrid**

**Arquitectos· Architects:  
Entresitio. María Hurtado de  
Mendoza Wahrolén. César  
Jiménez de Tejada Benavides  
José María Hurtado de  
Mendoza Wahrolén**

**Colaboradores· Team:  
Jorge Martínez, Laura  
Frutos, Vincent Rodriguez,  
Fabrice Quemeneur, Filipe  
Minderico, Clara Rodriguez,  
Marco Plazzogna, Alvar Ruiz  
Villanueva, María Urigoitia  
Villanueva; Estructuras e  
instalaciones· Structures  
and mechanical systems  
Geasyt. AT: Juan Carlos  
Corona Ruiz David Gil  
Crespo**

**Superficie· Area:  
1922.63 m<sup>2</sup>**