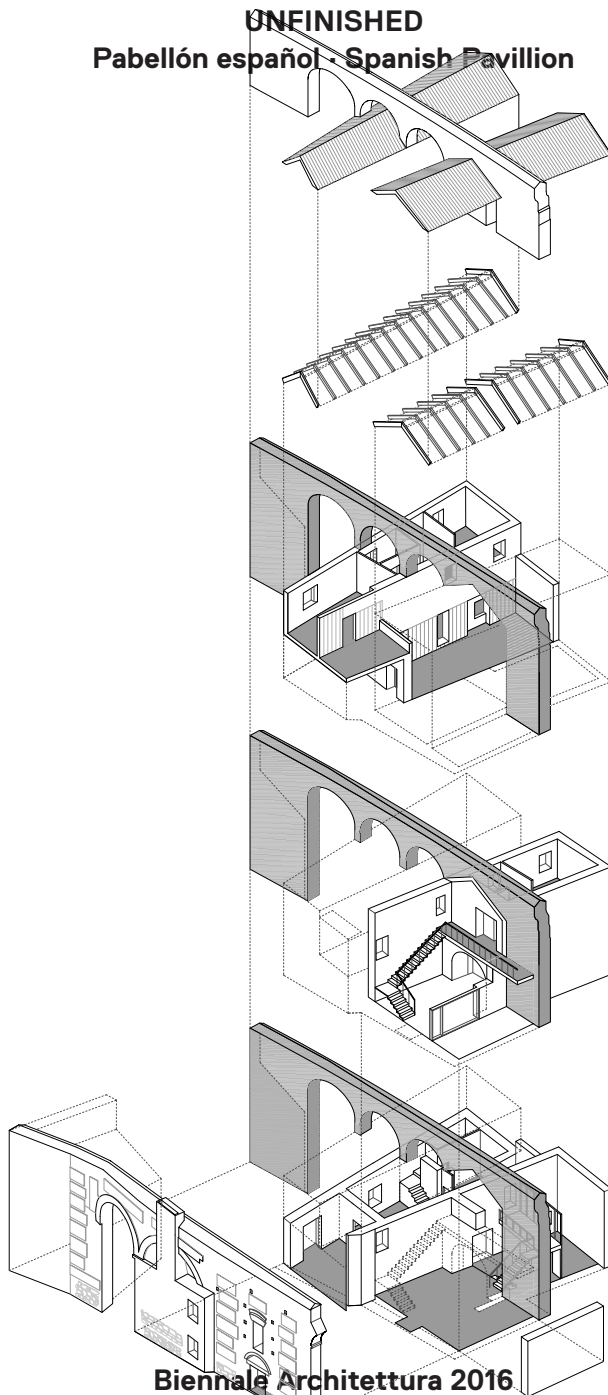


UNFINISHED
Pabellón español · Spanish Pavillion

Dos viviendas en Oropesa



Paredes Pedrosa Arquitectos

Biennale Architettura 2016
La Biennale di Venezia

Oropesa es conocida por su castillo, construido en 1402 como residencia de una familia de nobles de Toledo, que acometieron la construcción de una conexión aérea inconclusa entre el castillo y la Iglesia de Nuestra señora de la Asunción, apoyada sobre arcos y muros que atraviesan la ciudad, en los que se incrustan las viviendas. Éstas eran pequeñas y se encontraban muy divididas entre varias dependencias en ruinas, compartiendo dos patios detrás de una fachada, atravesada por amplios arcos de ladrillo. El proyecto abre un patio grieta en su interior, largo y estrecho, que ordena a ambos lados las dos viviendas desiguales para dos hermanos. Las cubiertas se desmontaron y rehicieron un metro más altas reusando las tejas. Las dos naves quedan engarzadas entre sí con los dos poderosos muros de arcos de ladrillo protegidos patrimonialmente.

Oropesa is known for its castle, built in 1402 as the residence for a noble family from Toledo, who undertook the construction of an unfinished aerial connection between the castle and the Nuestra señora de la Asunción church. The structure is supported by arches and walls that cut across the city, and in which these houses are embedded. The houses were small, with many divisions, and in ruins. They had two shared courtyards behind one of the facades, with wide brick arches crossing them. The project opens a long, narrow courtyard/crack, which defines two asymmetrical houses on either side, built for two siblings. The roofs were dismantled and rebuilt a meter higher, reusing the clay roof tiles. The two structures are linked together by the two powerful brick arches, which are protected as historical monuments.

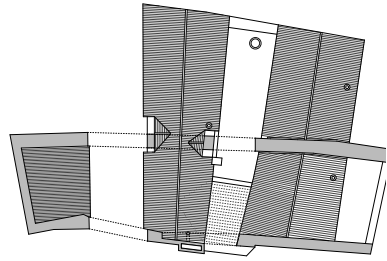
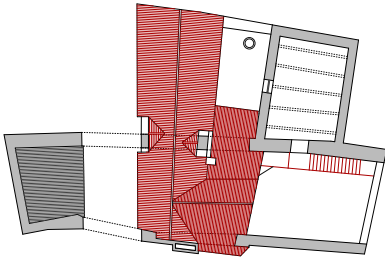




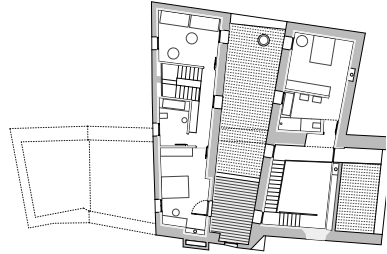
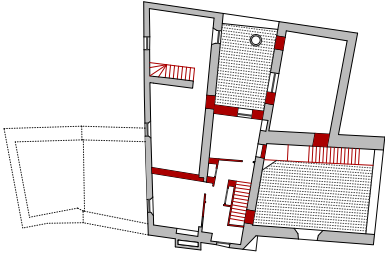




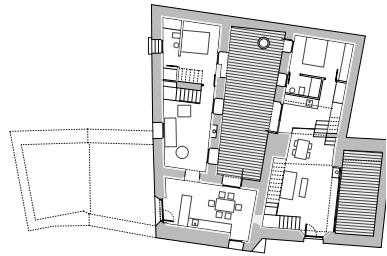
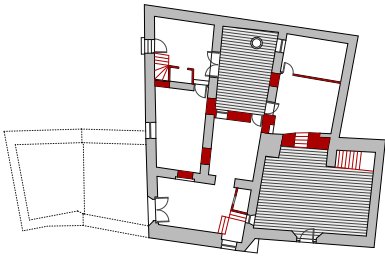
Plantas · Plans



PLANTA DE CUBIERTAS



PLANTA NIVEL 1

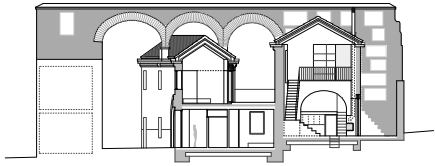
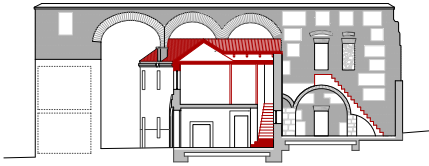


PLANTA BAJA

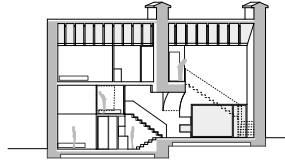
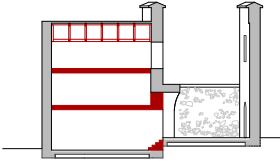
ESTADO ORIGINAL
DEMOLICIONES

INTERVENCIÓN

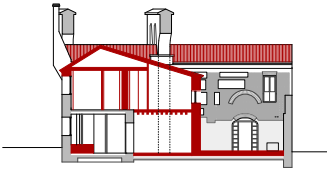
Secciones · Sections



SECCIÓN S1



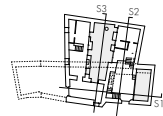
SECCIÓN S2



SECCIÓN S3

ESTADO ORIGINAL
DEMOLICIONES

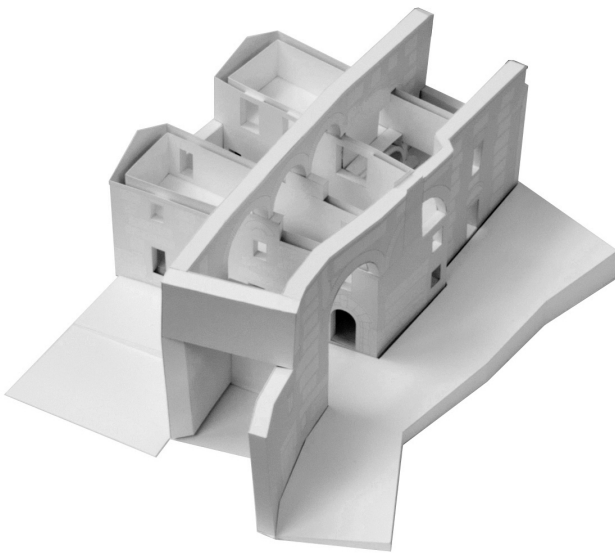
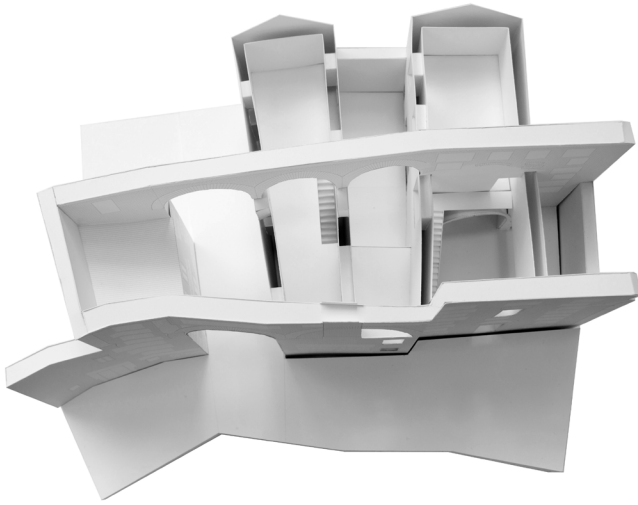
INTERVENCIÓN



Plano detalle - Detail



Maqueta · Model



**Dos viviendas en Oropesa-
Two houses in Oropesa**

**Localización· Location:
Calle Iglesia 1 y 3, Oropesa.
Toledo**

**Arquitectos· Architects:
Ángela García de Paredes.
Ignacio Pedrosa**

**Colaboradores· Team:
Álvaro Rabano, Clemens
Eichner, Roberto Lebrero,
Blanca Leal. (Estructura.
Structural design) Alfonso
G. Gaite. GOGAITE, S.L.
(Instalaciones. Mechanical
engineer) Nieves Plaza.**

**Superficie· Area:
316m²**

**Fotografías· Photography:
Luis Asín**

2011-2015

Infill

<http://unfinished.es/obras/29.pdf>